



# Sommaire

1. Leur apparition

2. Leur alimentation et habitat

3. Leur disparition

4. Et après ça ?

5. Pour finir...

# 1. Les premières apparitions

3 000 000 000

300 000

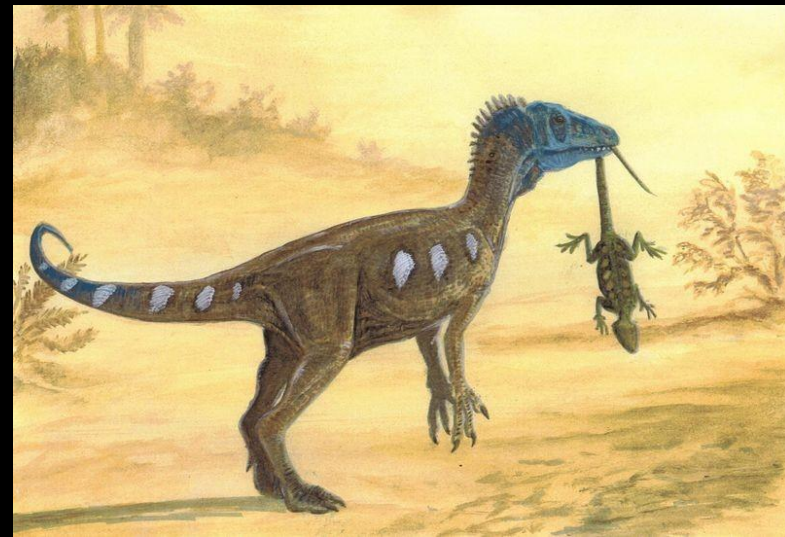
200 000 000







Ischigualasto

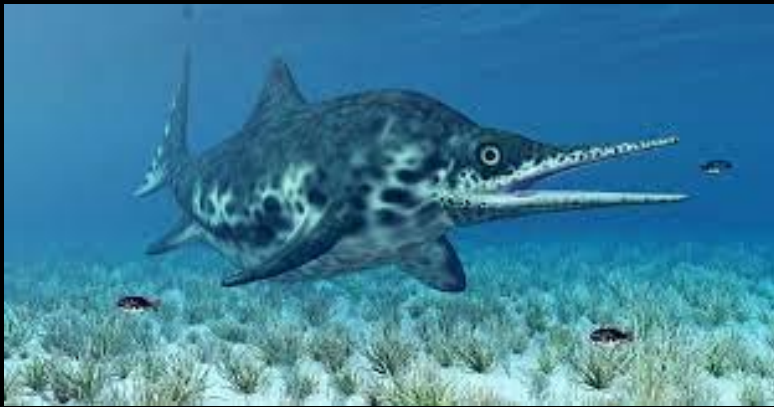


Eoraptor

Herrerasaurus



# Quel a été le premier dinosaure marin ?



Ichtyosaure



Thalassomedon



Plésiosaure

## 2. Comment se nourrissaient-ils et comment vivaient-ils ?

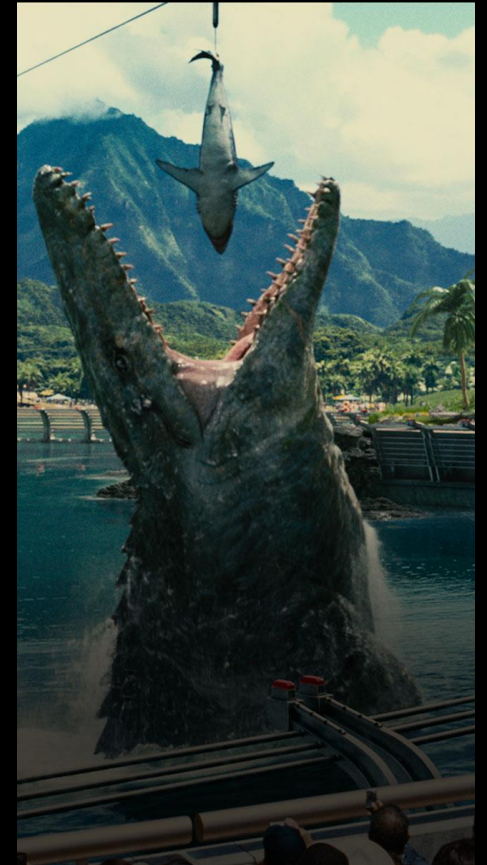


Dilophosaurus

Dragon de Komodo



Mosasaurus



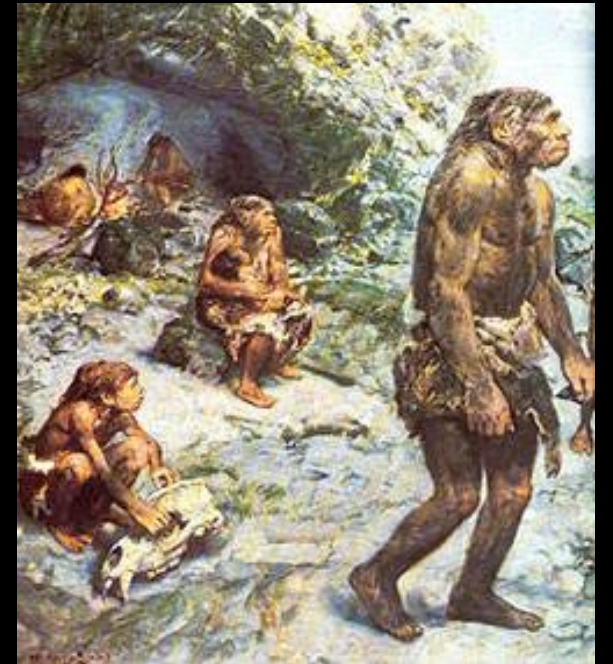
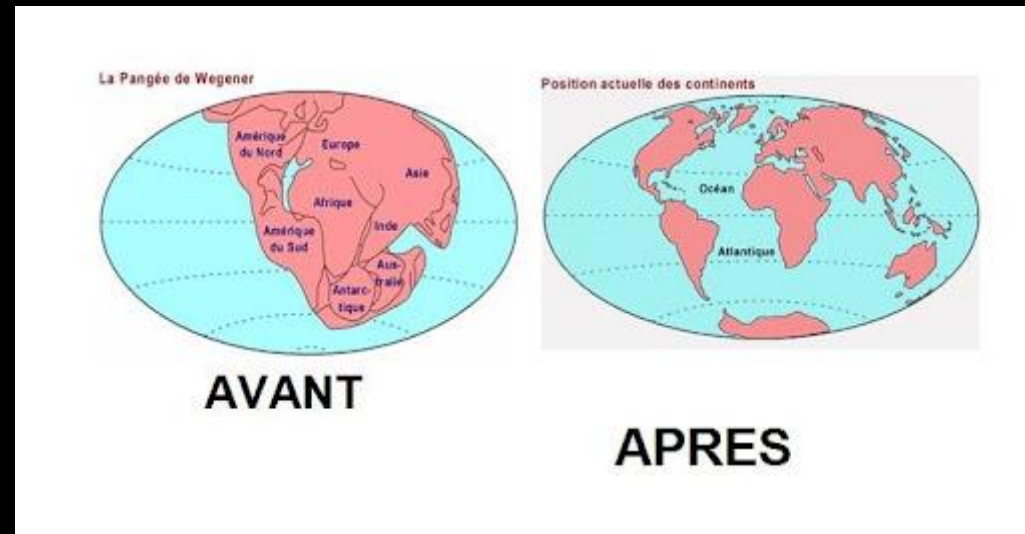
Dimorphodon

# 3. Comment ont-ils disparu ?





# 4. Et après leur disparition ?



# 5. Pour finir...



*The End*

The image features the words "The End" written in a white, elegant cursive script. The text is set against a dark blue circular shadow. This central element is positioned within a target-like graphic consisting of several concentric circles. The innermost circle is white, and the surrounding rings are a vibrant red, creating a strong visual contrast. The entire graphic is centered on a solid black background.